

Multi Socket PDU

1:1 16 A



Plug & Play
installation

HIGHLIGHTS

- **8 programable output**
- **LDC display**
- **Versatile to use**

The Riello UPS Multi Socket PDU (MDU) is designed to distribute AC power from a single source to 8 outputs with advanced load monitoring and local or remote ON/OFF switching control of individual outlets. The Riello UPS Multi Socket PDU provides best-in-class power distribution, enabling data center and information technology (IT) managers to effectively monitor and manage their rack environments. The LCD display allows you to view the status of each output (ON / OFF), the input voltage and current, the current on each output and any alarm codes present.

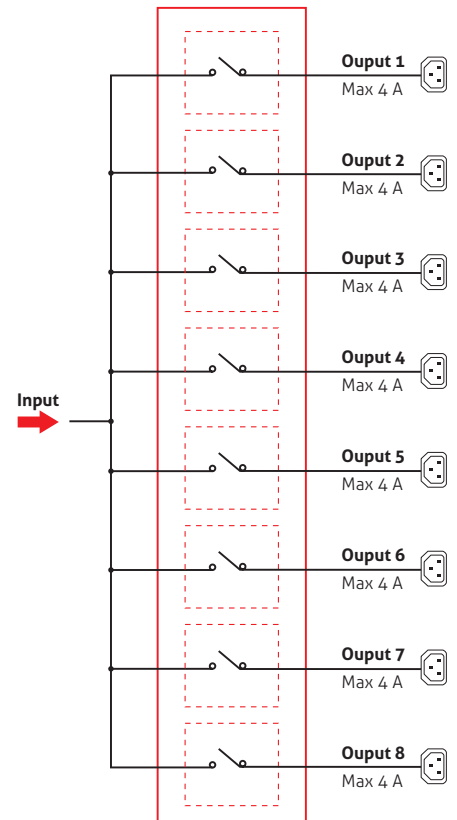
At the top of the display, there are eight icons representing the status of the eight outputs: if the icon is on, the relative output is powered; if icon is off, the relative output is not powered; if the icon is blinking, the relative output is overloaded.

Expandability

The Multi Socket PDU is equipped with an expansion slot for accessory communication boards like, for example, network board NetMan 204. For further information on the accessories available, visit the web site www.riello-ups.com.

Characteristics

- Input current up to 16A
- Maximum output current for a single socket: 4A
- LCD display
- Current threshold for outputs settable by user.
- Voltage and current threshold for input settable by user
- USB and RS232 communication ports.



OPTIONS

SOFTWARE

PowerShield³

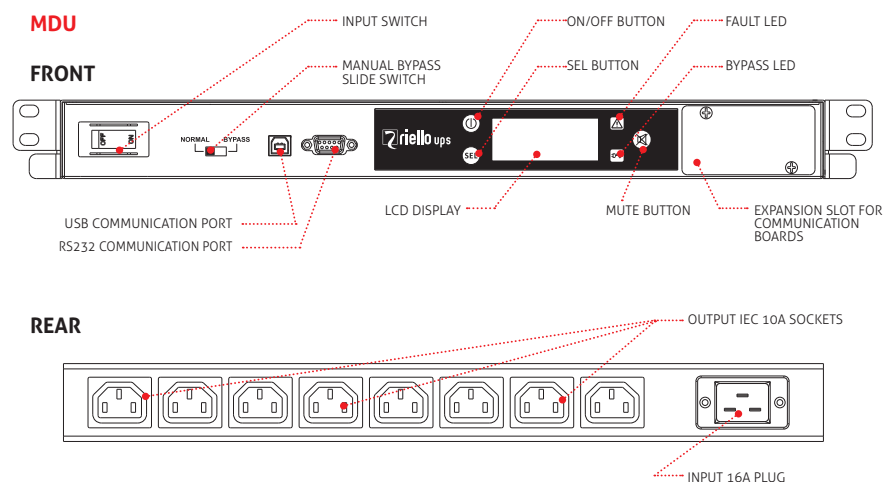
ACCESSORIES

NETMAN 204

MULTICOM 302

MULTICOM 352

DETAILS



MODELS	MDU
NOMINAL CURRENT (A)	16
INPUT	
Nominal voltage	230 Vac single-phase + N
Input voltage tolerance	184-276 Vac (selectable)
Switched input phases	ph+N (two poles)
Nominal frequency	50/60 Hz
Input sockets	1 IEC 320 (16 A)
OPERATING SPECIFICATIONS	
Switch time	< 8 msec
OUTPUT	
Max. load for each output	4 A on IEC-320 C13
Output sockets	8 IEC-320 C13
ENVIRONMENTAL SPECIFICATIONS	
Noise at 1 m from front (from 0 to full load)	< 25 dBA
Storage temperature	-10 °C up to +50 °C
Operating temperature	0 °C - 40 °C
Relative humidity	90% non-condensing
Max. installation height	1000 m at nominal power (-1% power for every 100 m above 1000 m) - Max 4000 m
Reference standard	EN 62310-1 (safety) EN 62310-2 (electro-magnetic compatibility)
INFO FOR INSTALLATION	
Weight (kg)	5
Dimensions (WxDxH) (mm)	19" x 250 x 1U
Colour	RAL 5004
IP rating	IP 20
Communications	RS232 / USB / Slot for communication interface